



# Paws, Claws and More

Mount Hutton Pet Hospital Newsletter

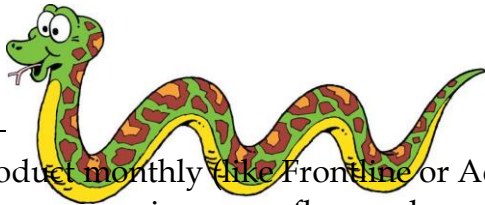
Spring edition 2006

**Mount Hutton**  
PET HOSPITAL

Shop 15, Progress Road  
Mt Hutton NSW 2290 Phone: 4947 1311  
[www.mthuttonvet.com.au](http://www.mthuttonvet.com.au)

## IN THIS ISSUE

Are you still seeing fleas?.....	1
Picking a puppy or kitten.....	2
Go native.....	2
Kids Korner.....	3
Slimmers Club.....	5
Breed bio: Tonkinese.....	5
Urinary Incontinence.....	6
Staff Profile-Dr Lee.....	6



## Are you still seeing fleas whilst on flea control? If so these may be the reasons

- Fleas breed on dogs, cats, ferrets and rabbits. Flea eggs drop off the animal into the environment where they develop into adult fleas ready to jump onto any pets they encounter.
- If you are only seeing 1-5 fleas on your pet, they may be picking them up from a infested environment such as the park or areas where there are lots of dogs, or from animals' environments not on flea control. Be sure to apply a flea product monthly (like Frontline or Advantage) so the fleas jumping on will die within 24hours.

- If you are seeing many fleas make sure they cannot get under the house, as this environment is great for fleas to breed.
- Ensure you are using the correct product and dose for your pet. If you share a one monthly application between 2 or more pets the spreading factor will not work correctly and you will still see fleas.
- Make sure you use the product monthly and 12 months a year. Each flea you see on your pet before the application of flea control has laid between 40-50 eggs in the environment. Eggs can hatch up to 6 months later ready to re-infest your pet. Flea prevention kills these fleas within 24hrs.
- Frontline lies in the oils in the pet's coat! If you wash the oils away you wash the flea product away too, so try not to wash your dog too frequently and make sure you use a soap free shampoo such as Allergroom or Epi-soothe. Avoid using flea shampoo, human shampoo, wool wash, tick rinses etc these will strip your pet's natural oils from the skin.
- Flea controls can be applied once the pet is completely dry, and 48hours after it is applied the pet is able to be washed and bathed- make sure using the correct shampoo!
- Washing the pets bedding in hot water (at least 60 degree's) may assist in reducing the environmental contamination.



# What to consider when picking a Puppy or Kitten.

When choosing your new best friend there are many things to consider, probably the most important is to decide what type of dog or cat would best suit yours and your family's lifestyle and expectations.

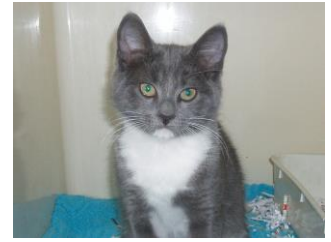
Whether to choose a pedigree or a mixed breed puppy or kitten is really a personal choice, you should research the breeds you like to find the pros and cons before you jump into a 10-15 year commitment.

If you can find out what the breeds were originally used for you can get a good idea of their requirements such as,

- Personality, are they one person cat or dog or are they better as a family pet?
- Exercise, if you have a working or large breed dog they need a lot of exercise and stimulation and require large yards and lots of interaction and are suited more to younger active people. If you have a small lap dog they tend not to need much exercise at all and are suited to apartment units with little yards and are better for the older less active people.
- Grooming, would long hair or short hair suit your family better? Are you going to have the time and money to have a long hair dog or cat groomed regularly?
- Housing, is your yard big enough for the pet you want, do you have adequate fencing? Will the pet be inside or outside or both?
- Hereditary Diseases or problems, such as Hip dysplasia, luxating Patellas (dislocating knees) and heart murmurs. With the research of breeds and breeders you can generally avoid these problems.

All pets are expensive but as a common rule larger breeds of animal tend to cost more as they require larger amounts of food and medications.

As puppies and kittens you need to make sure that they are vaccinated, microchipped, wormed and vet checked before you purchase them. If you would like some help choosing a pet for your family you can look on our web site at [www.mthuttonvet.com.au/dogs/](http://www.mthuttonvet.com.au/dogs/) or [www.mthuttonvet.com.au/cats/](http://www.mthuttonvet.com.au/cats/) and select the link for Pick A Pet this is a series of questions that will help to determine which breed of pet is best suited to your lifestyle and offer a few selections.



## GO NATIVE

It is common during this season that many young feathered Tawny Frog Mouth birds are unnecessarily brought down to the Hospital assumed abandoned or injured.

However young Tawny Frog Mouths can be returned to their parents –

if you find one on the ground that has fallen out of a tree and is otherwise uninjured the best thing you can do for the bird is to keep it in a dark secure box and return it to the tree where it was found just before dark. Place it in a branch as high up as you can and observe it from a distance. Most of the time the parents will be in the vicinity calling out for it or in the tree waiting for their baby to be returned! If you do come across this situation and are unsure of what to do call the Hospital, or the Native Animal Trust Fund for advice on 0500 502 294. If you are interested in becoming a volunteer please contact the Native Animal Trust fund.



**Puppy Preschool  
New Classes starting on  
13<sup>th</sup> September  
23<sup>rd</sup> September  
11<sup>th</sup> October**

# Introducing Slimmers Club

Has your best friend found some extra kilos over winter?

Are they fluffier than they used to be? If so your pet may be overweight! Did you know that obesity is the most common nutritional disorder seen in cats and dogs! In Australia 41% of dogs and 33% of cats are considered obese. Realising this, we have recently started a Slimmers Club to offer clients a clinically proven low calorie/high fibre diet to

reduce their pets weight while still making sure that their nutritional needs are met.

Jessie is a Mount Hutton Pet Hospital success story. Jessie reached her goal weight in 16 weeks with lots of help from a very determined owner! She is now a much happier healthier dog.

**If your pet has a weight problem or you'd just like some more information don't hesitate to give us a call on 4947-1311.**



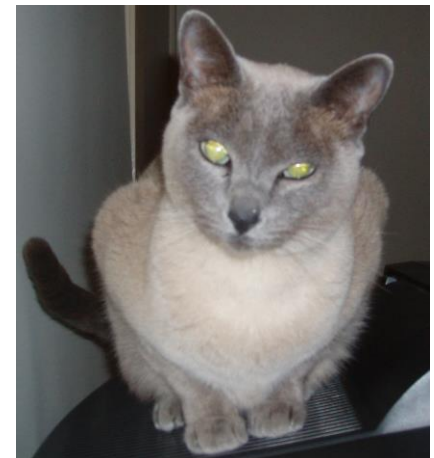
## BREED BIO: Tonkinese cats

**HISTORY:** The Tonkinese is a relatively newly developed breed originating from the Burmese and the Siamese cat breeds. The Tonkinese were only accepted into the show ring in the 1980's.

**CHARACTERISTICS:** Best known for their unique eye colour, Tonkinese can have aqua marine eyes. They are a medium sized short coated cat that requires minimal grooming and are bred with 3 different coat types, solid, mink and point.

**PERSONALITY:** The Tonkinese have been described as part dog they follow their owners around like a puppy, enjoy playing fetch, hide and seek and chasing balls. They are also very acrobatic and love riding around on peoples shoulders.

**SPECIAL REQUIREMENTS:** Lots of attention - Tonkinese are a highly intelligent and interactive pet. Working owners find getting two Tonks prevents boredom and loneliness.

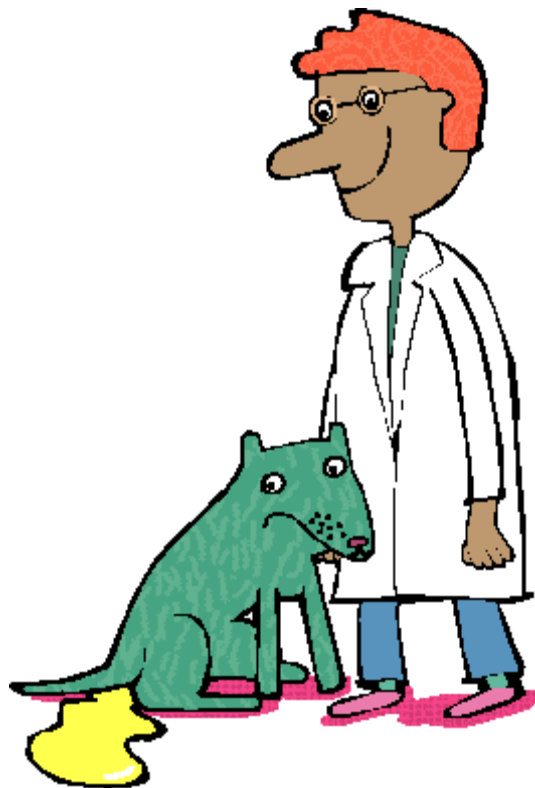


# URINARY INCONTINENCE

Urinary incontinence is an unpleasant experience for dogs and their owners.

A dog that is incontinent will involuntarily leak urine with varying degrees of severity. Some dogs will only leak small amounts when they are asleep while others uncontrollably leak urine all the time. To become more comfortable dogs will generally lick the urine stained area in attempt to keep clean and owners will continually be washing bedding and bathing the dog to minimize the odour of urine.

Fortunately there is an affordable medication available that prevents the leakage of urine and improves the quality of life of pets with incontinence. If your pet develops urinary incontinence don't feel helpless. Your dog may not be able to help it but you can. Urinary incontinence can be treated!



**With Spring comes itchy and irritated skin. In anticipation of the itchy season all the Veterinary Nurses from Mount Hutton Pet Hospital have recently attended a Virbac Training session and are fully prepared to offer you advice on which Shampoos and Rinses to best help your pet.**



## STAFF PROFILE Dr Lee Dwyer

Hi, my name is Lee and I have recently started work at Mount Hutton Pet Hospital as a full time Vet. I graduated in 2002 after completing my degree plus an additional honours year chasing common wombats around Marulan and examining wombat faeces under a microscope – fascinating! I am currently living in the central coast with my partner and have only one cat, 'Mieke'. In my spare time I enjoy swimming, reading and try to ride my bike occasionally. I am looking forward to meeting you and your pets.

# KIDS KORNER



Did you know that Butterflies extract nectar from flowers using a very long tube which is like their tongue!



Did you know that Bumble bees defeat gravity and physics as their wings are very small in comparison to their body, so they shouldn't be able to fly but they can!!!

1		2							3			
						4						
	5											
						6						
		7										

## DOWN

- 2. This parasite can cause paralysis...
- 3. Animals and People may get a reaction from pollen, dust, plants etc. This is called an...

## ACROSS

- 1. Your pet may need these more regularly in spring when they get smelly?
- 4. Bees collect this from from Flowers...
- 5. Dogs and Cats may do this when they have an itchy spot?
- 6. This little parasite can Jump as high as 6 feet!
- 7. A yellow and black insect can give you a nasty...



Lots of baby animals are born in Spring!



Down-2 Tick, 3 Allergy  
 Across-1 bath, 4 Pollen, 5 Scratch, 6 Flea, 7 Beesting.